

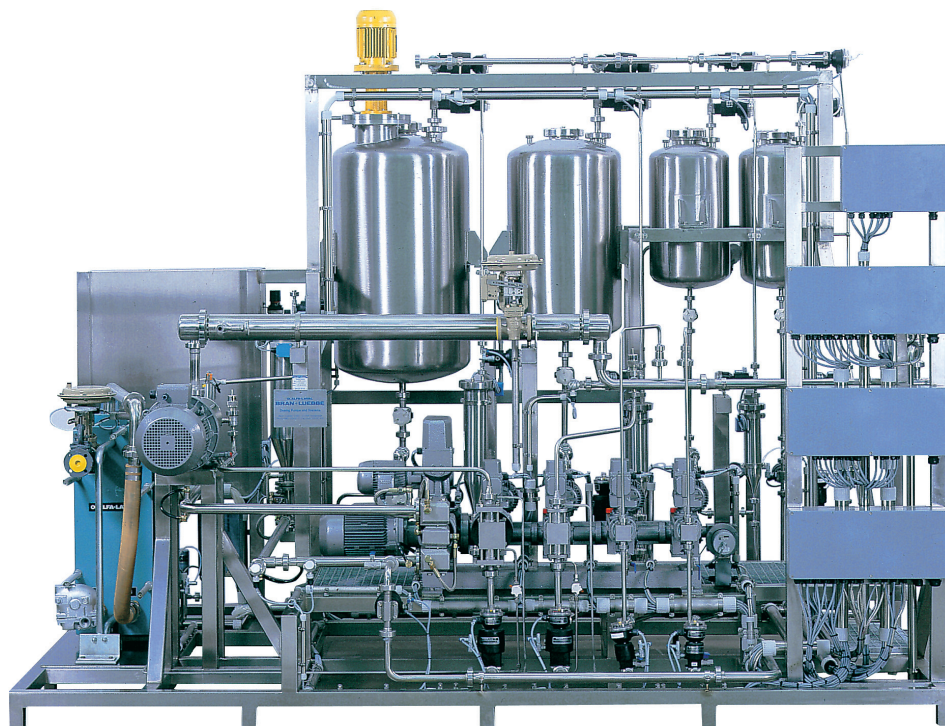


AutoBlend Systems

BODY LOTION PRODUCTION

Advantages

- Continuous production enables sterile operation and direct transfer to the filling station.
- No air introduction to finished product.
- Constant product quality.
- Flow-through cleaning and sterilization with automatic CIP-system.



Continuous production of high quality body lotion is achieved using a Bran+Luebbe metering and mixing system, incorporating emulsification with a Bran+Luebbe PENTAX mixer. The end-product is cooled in a tube heat exchanger. The computer-controlled system uses both mass flow meters and LIV stream monitoring. The aseptic design includes a CIP cleaning system.

- 4 Type P metering pumps with electric delivery volume control, 4 plunger pump heads (1 pump head heated).
- 1 PENTAX dynamic mixer.
- 3 pipe heat exchanger in sanitary design.
- 1 on-line mass flowmeter.
- 1 on-line pH-analyzer.
- 1 on-line viscosity analyzer.

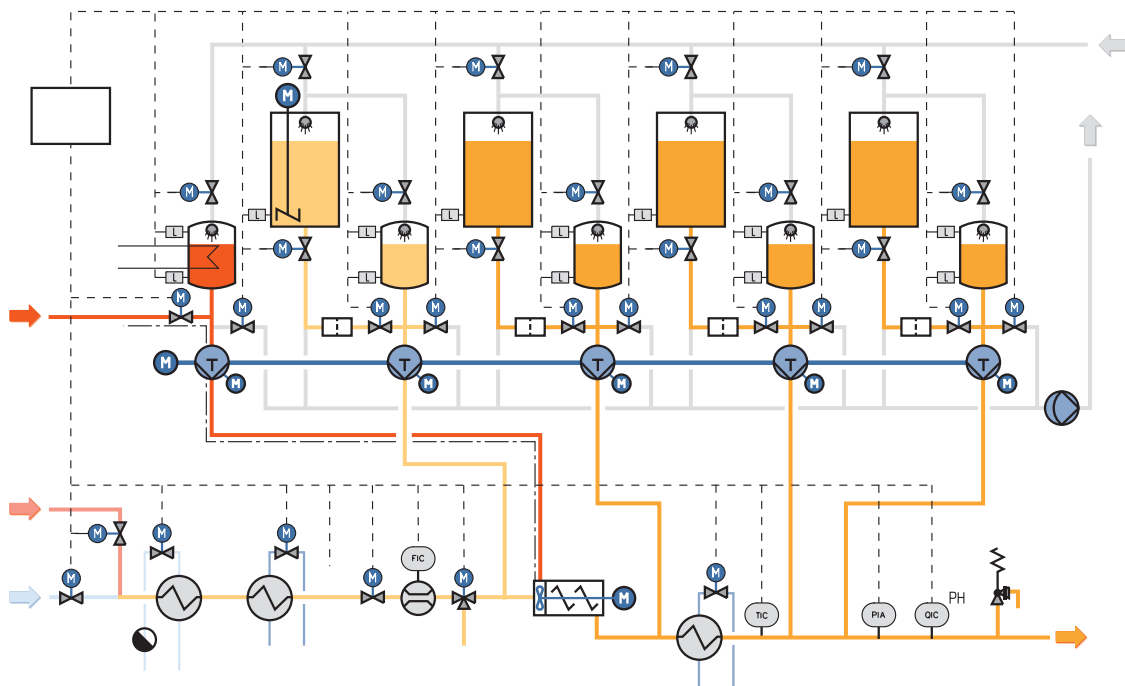
Components

- 1 Type KH metering pump with electric delivery volume control, plunger pump head.

Automation

- Fully automatic process control.
- Recipe and product management with data report.
- Automatic product monitoring with control loop.

Simplified Process Diagram



- Automatic shut down if any ingredient runs out.

Global locations

USA

SPX GLOBAL HEADQUARTERS

13320 Ballantyne Corporate Place
Charlotte, NC 28277
United States of America
Phone: +1 704 752 4400

EMEA

SPX FLOW TECHNOLOGY

Werkstraße 4
D-22844 Norderstedt
Phone: +49 (0) 40 - 522 02 -0
Fax: +49 (0) 40 - 522 02 -444

SPX FLOW TECHNOLOGY

Ironstone Way
Brixworth, Northants, NN69UD
Phone: +44 (0) 1604 881751
Fax: +44 (0) 1604 880145

APAC

SPX FLOW TECHNOLOGY

25 International Business Park
#03-03/12, German Centre,
Singapore 609916
Phone: +65 6568 1568
Fax: +65 6265 9133
E-Mail: asia.pacific@spx.com



SPX FLOW TECHNOLOGY 611 Sugar Creek Road, Delavan, WI 53115

P: (800) 252-5200 or +1 (262) 728-1900, F: (262) 728-4904

E: branluebbe@spx.com • www.spx.com