

Download Zip file from SPXFLOW website.

UNZIP! Do Not install from zip file directly!

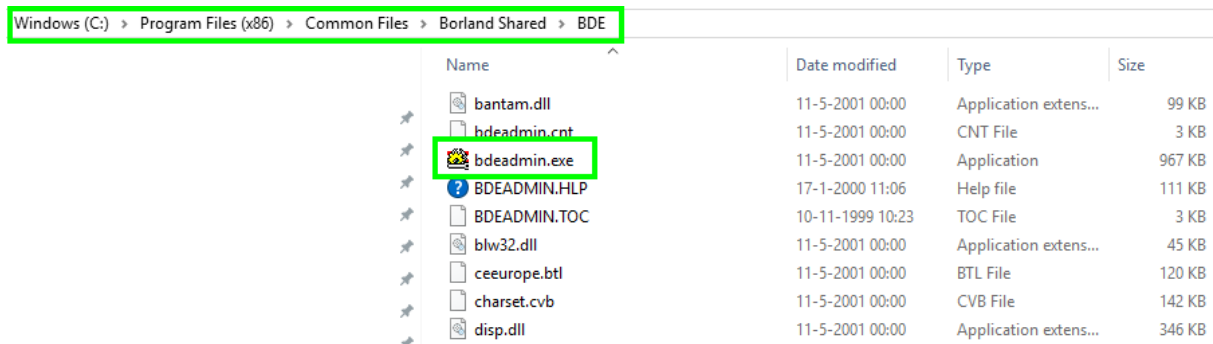
After unzip run setup file and finish installation.

If all is without error messages, run HI2 and program should start normally.

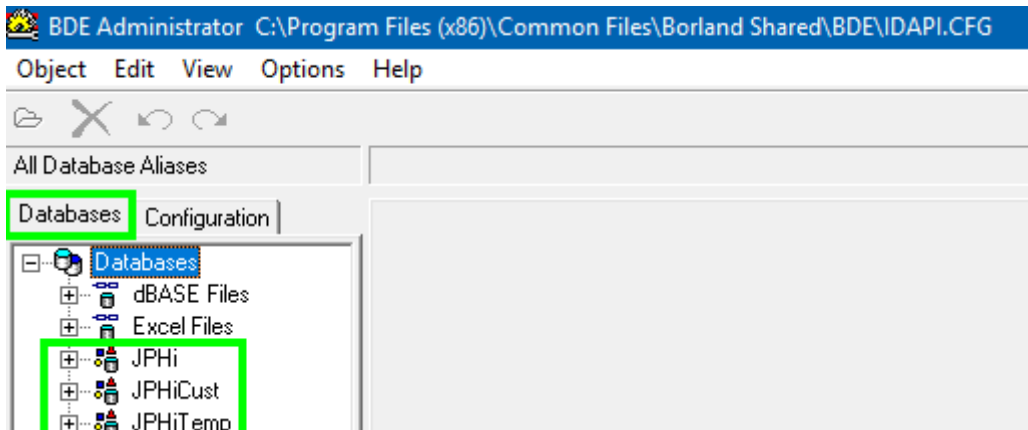
If during installation a message is displayed like: " BDE cannot merge IDAPI.CFG" this means that there are no entries created in the Borland Engine Database reference.

That means that these references must be created manually:

- Open Windows Explorer and locate the file bdeadmin.exe

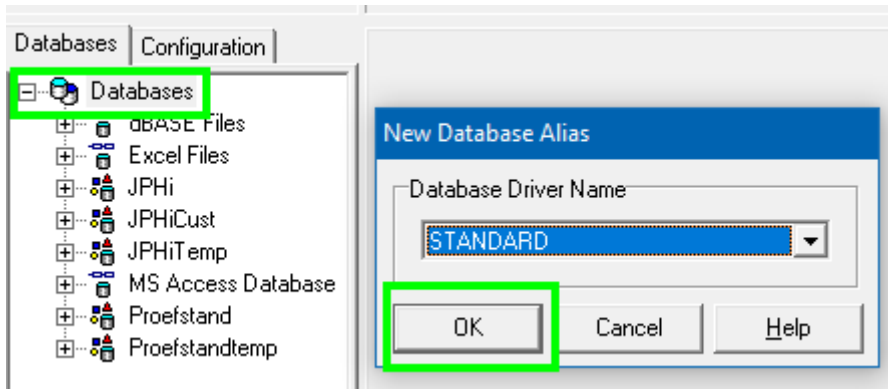


- Run this file and it will open the Admin Tool



- 3 Entries JPHxxx should exist. If not, these need to be created manually:

Use Right Mouse Button on Databases and select “ New”



This will show above new Database Alias and click OK.

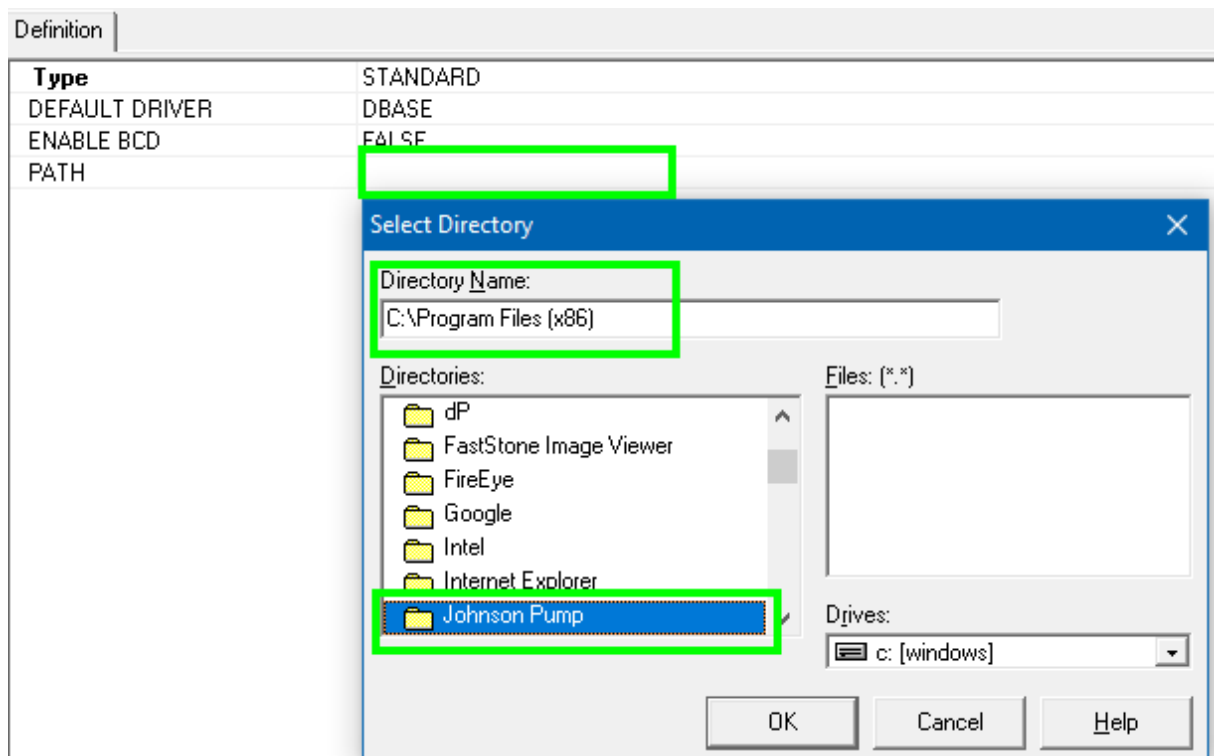
A new entry will appear and you have to change the name into JPHi

The values for this new entry are displayed at the right side and the DEFAULT DRIVER has to be changed from PARADOX into DBASE. Just double click on the entry to switch to next type until DBASE is set.

Type	STANDARD
DEFAULT DRIVER	PARADOX
ENABLE BCD	FALSE
PATH	

Type	STANDARD
DEFAULT DRIVER	DBASE
ENABLE BCD	FALSE
PATH	

Double click in the field "PATH" and select the correct path where the software was installed.

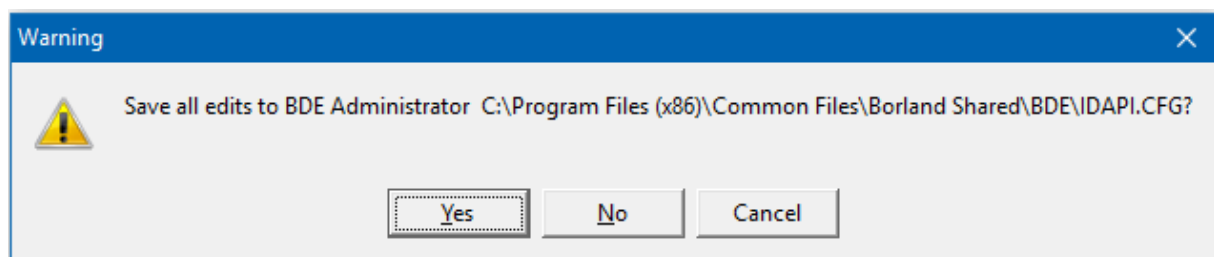


Open the directory and select DataHi to reference the new entry with PATH DataHi



Click OK to confirm and **EXIT the application**. Click Yes to Save all changes.

NOTE! Create only 1 new entry and save each entry separately!



Open the BDEAdmin tool again and check / confirm if new created entry was saved and exist correctly.

Repeat the above steps to create entries for:

- JPHiCust and reference this with PATH DataCust
- JPHiTemp and reference this with Path DataTemp

If all entries are created and exist, run HI2 and it should open without any error messages.