

# Power Team®



## PANCAKE LOCKING COLLAR CYLINDERS



IDEAL FOR APPLICATIONS THAT REQUIRE  
LIFTING IN TIGHT OR CONFINED SPACES

# SPX FLOW®

Model Shown:

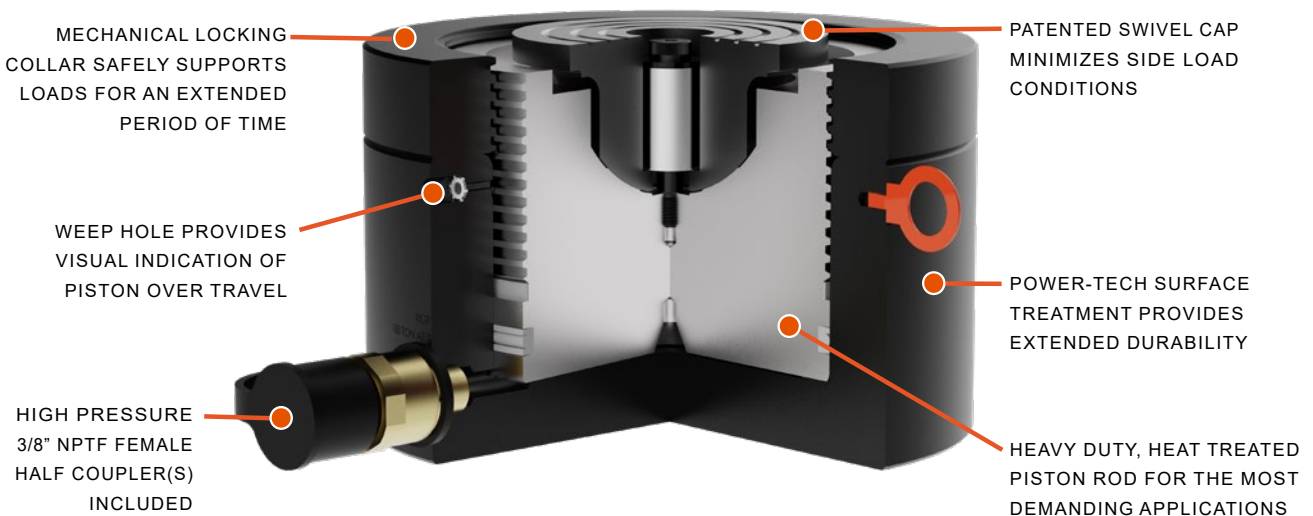
**RGP5652, RGP2202**



**>Features**

- The Mechanical locking collar safely supports loads for an extended period of time removing the chance of a hydraulic leak down causing a load shift.
- The Patented 5 degree deep swivel cap concentrates loads to minimize offset conditions.
- Compact design is ideal for confined areas
- Buttress thread design supports locking collar strength and security along with time saving quick run-down
- *Power-Tech* nitro-carburization surface treatment inhibits corrosion and provides exceptional durability
- Weep hole provides visual indication of piston over travel
- One high flow 3/8" NPTF female half coupler and carry eyelets are included


**A Closer Look at the New Cylinder Technology**



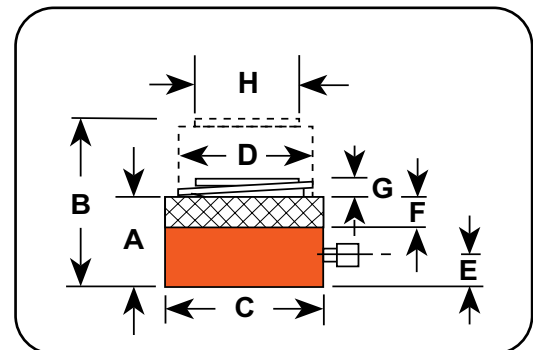
Pancake locking cylinders are ideal for tight quartered locations.



⚠
Cylinder Selection



When selecting a hydraulic cylinder(s) capacity and stroke, Power Team recommends that you size to 80% of the maximum rated capacity and stroke for the application - known as the “80% Rule”. This will ensure additional safety factor and extend the product performance over time.



Ordering Information

Tonnage	Stroke	Order No.	A	B	C	D	E	F	G	H	Cyl. Eff. Area (Adv.)	Oil Cap.	Internal Press at Cap.	Tons at 10,000 PSI	Weight w/o Oil
			Ret. Height	Ext. Height	Outside Dia.	Bore Dia.	Base to Port	Nut Thickness	Swivel Cap Protrusion	Swivel Cap Dia.					
(tonne)	(mm)		(mm)	(mm)	(mm)	(mm)	(mm)	(mm)	(mm)	(mm)	(sq. cm)	(cu. cm)	(bar)	(tonne)	(kg)
61	44.45	RGP672	121.41	165.86	147.32	104.78	21.84	22.23	0.69	70.61	86.22	383.23	691	60.6	15.2
100	44.45	RGP1102	132.33	176.78	177.80	136.53	22.53	28.58	1.07	98.30	146.39	650.69	669	102.9	23.7
163	44.45	RGP1802	147.83	192.28	228.60	171.45	26.67	34.93	2.51	117.60	230.86	1,026.18	694	162.3	44.1
200	44.45	RGP2202	156.72	201.17	254.00	190.50	28.19	40.64	2.46	136.40	285.01	1,266.89	687	200.4	57.7
254	44.45	RGP2802	159.26	203.71	279.40	215.90	30.48	41.91	2.44	141.22	366.09	1,627.25	680	257.4	70.4
390	44.45	RGP4302	177.80	222.25	355.60	266.70	39.37	47.63	2.64	169.16	558.63	2,483.10	685	392.8	128.1
513	44.45	RGP5652	193.04	237.49	406.40	304.80	46.74	53.34	6.30	197.36	729.64	3,243.24	689	513.0	180.8

## GLOBAL CUSTOMER SERVICE CENTERS

### North America Headquarters

5885 11th Street  
Rockford, IL 61109  
USA

### Customer Service/Order Entry

Tel: +1 800 541 1418  
Fax: +1 800 288 7031

Send P.O.'s to: [info@powerteam.com](mailto:info@powerteam.com)

### Technical Services

Tel: +1 800 477 8326  
Fax: +1 800 765 8326

### European Headquarters

Albert Thijsstraat 12  
6471 WX Eygelshoven  
The Netherlands  
Tel: +31 45 567 8877

[infoeurope@powerteam.com](mailto:infoeurope@powerteam.com)

### SEA Headquarters

20 Pioneer Crescent #06-01  
West Park BizCentral  
Singapore 628555  
Tel: +65 6264 4366  
Fax: +65 6265 9133

[infoasia@powerteam.com](mailto:infoasia@powerteam.com)

### India Headquarters

SPX Flow Technology (India) Pvt. Limited  
Survey No. 275  
Odhav, Ahmedabad - 382 415  
Tel: +91-99099-85454  
+91-97277-19950

[india@powerteam.com](mailto:india@powerteam.com)

### China Headquarters

7F Treasury Building  
1568 Huashan Road  
Shanghai, 200052 China  
Tel: +86 21 2208 5888  
Fax: +86 21 2208 5682

[infochina@powerteam.com](mailto:infochina@powerteam.com)

### Australia Headquarters

SPX Flow Technology Australia Pty Ltd  
Quad 2, 6 Parkview Drive  
Homebush Bay NSW 2127  
Tel: +61 02 9763 4900  
Fax: +61 02 9763 7888

[Ft.aus.cs@spxflow.com](mailto:Ft.aus.cs@spxflow.com)

## ENGINEERING, MANUFACTURING AND SUPPORT CENTER

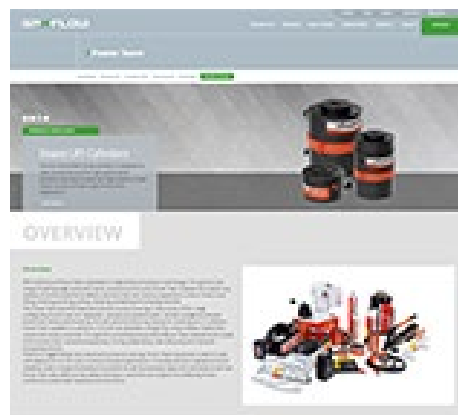
### World Headquarters

5885 11th Street  
Rockford, IL 61109, USA  
Tel: +1 815 874 5556  
Fax: +1 800 288 7031

[info@powerteam.com](mailto:info@powerteam.com)



Visit us at [powerteam.com](http://powerteam.com) to learn more.



Distributed by:

# SPXFLOW

SPX FLOW, Inc. reserves the right to incorporate our latest design and material changes without notice or obligation.

Design features, materials of construction and dimensional data, as described in this bulletin, are provided for your information only and should not be relied upon unless confirmed in writing. Please contact your local sales representative for product availability in your region. For more information visit [www.spxflow.com](http://www.spxflow.com).

The green "S" and "X" are trademarks of SPX FLOW, Inc.

PT\_RGP2101\_GB Version: 01/2021

COPYRIGHT © 2021 SPX FLOW INC.