



inflatable Jack

SPX[®]

Power Team
powerteam.com

Perfect for Many Applications

FLEXIBLE, SPACE AGE JACKING CAPABILITIES

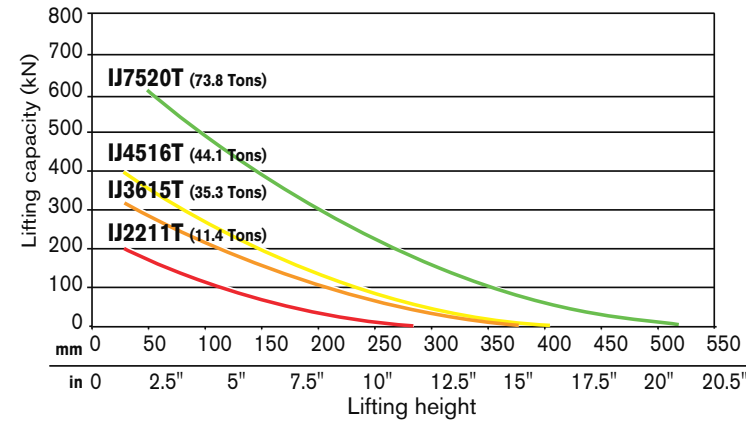
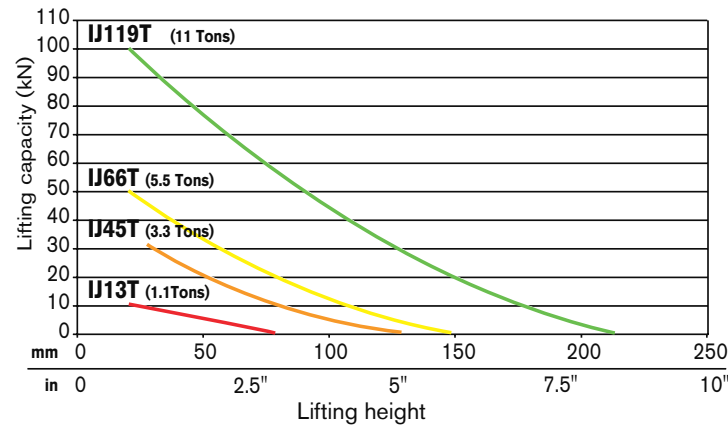
- Highly flexible and lightweight jacks only require an air supply of 8 bar (116 psi) maximum. Water or non-explosive gas can also be used for inflation.
- Un-inflated jacks are less than 30 mm (1.2 in) thick, making lifting tasks in small spaces seem routine.
- Constructed of non-conducting, high quality rubber material with multi-layer aramid fiber reinforcement.
- Samples of jacks are pressure tested to 20 bar and cycle tested (10,000 inflate / deflate cycles at 8 bar for 10,000 inflate / deflate cycles).
- The controller, shut-off and air hoses are all equipped with an industrial interchange style quick disconnect air coupler. Female half coupler bodies have a locking collar to help the operator avoid accidentally disconnecting the jack while under load.
- The top and bottom surface of the jack has a skid resistant, interlocking pattern to assist in alignment of two jacks being used together.
- Single jack controller with "dead man" control (part number 350090) can be used individually or in multiples to regulate the number of jacks desired.
- Heavy attachment handles are provided on the two largest jacks for attachment of a rope or hook to help in positioning the jack.
- Inflation hose system is color-coded (red and blue) for easy recognition when using more than one jack.
- The jacks can be used at ambient temperatures of -20°C (-4°F) to +50°C (+122°F).



TYPICAL APPLICATIONS

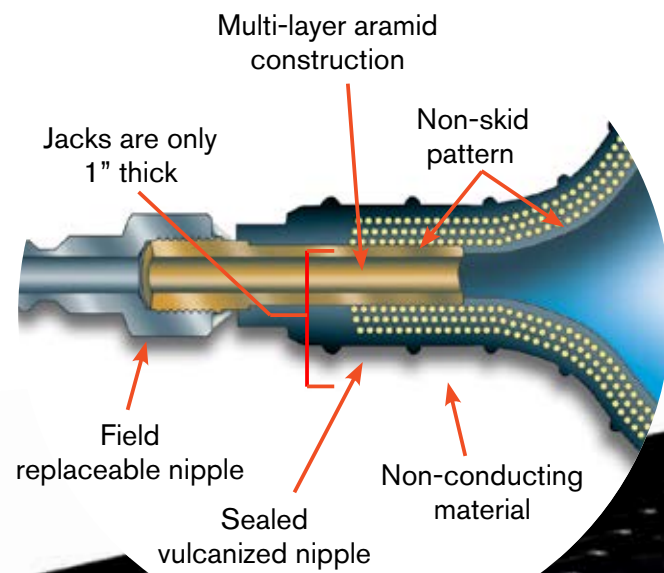


PERFORMANCE CHARTS

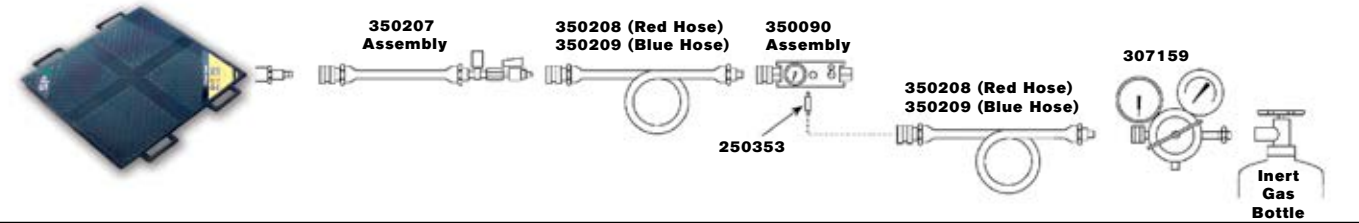


CONVERSION

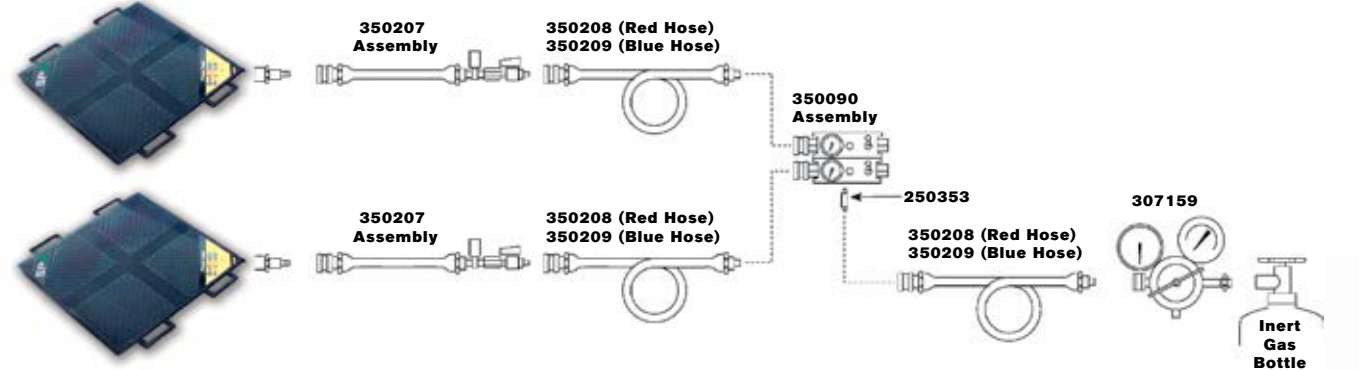
kN	LBS	KG	TONNES
1	225	102	0.1
5	1124	510	0.5
10	2248	1020	1.0
50	11241	5099	5.1
100	22481	10197	10.2
500	112405	50986	51.0
750	168807	76479	76.5



SINGLE LINE SYSTEM



DUAL LINE SYSTEM



ACCESSORIES



No. **15235** – Connector 1/8" NPT male x 1/4" NPT female. Wt., 0.1 lb.

No. **250341** – Female quick coupler. 1/4" industrial x 3/8" I.D. hose.

No. **250342** – Male Quick coupler. 3/8" I.D. Hose.

No. **250343** – Female quick coupler. 1/4" industrial interchange x 1/8" NPT female. Wt., 0.1 lb.

No. **250353** – Male quick coupler. 1/4" industrial interchange x 1/8" NPT male. Wt., 0.1 lb.

No. **250682** – Female quick coupler. 1/4" industrial interchange x 1/4" NPT male. Wt., 0.1 lb.

No. **307159** – Pressure reducing valve. Allows use of bottled gases to operate jacks (works on CGA-580 Nitrogen/Argon/Helium bottles). Contains standard bottle fitting on inlet and 1/4" industrial interchange (female) outlet. Wt., 4 lbs.

No. **350090** – Air controller for single jack. Equipped with relief valve and pressure gauge.

No. **350207** – Shut-off hose with shut-off valve and pressure relief valve. Includes a female and male quick coupler.

No. **350208** – Air hose. Red, 30' long. Includes No. 250341 female and No. 250342 male quick coupler.

No. **350209** – Air hose. Same as 350208, except blue in color.

* NOTE: 350090 air controller may be used individually to control one jack (see single line system), or in multiples to control additional jacks (see dual line system).

ORDERING

Lifting Capacity		Max. Lifting Height		Order Number	Air Volume	Water Volume	Uninflated Dimensions (Length x Width x Thickness)		Product Weight	
(kN)	(lbs)	(mm)	(inch)		(liter)	(liter)	(mm)	(inch)	(kg)	(lbs)
10	2,248	80	3.1	IJ13T	3.3	0.7	150 x 150 x 22	6 x 6 x 0.87	0.6	1.3
32	7,194	130	5.1	IJ45T	16.2	1.8	228 x 228 x 22	9 x 9 x 0.87	1.5	3.3
50	11,240	150	5.9	IJ66T	22.5	2.5	270 x 270 x 22	11 x 11 x 0.87	2	4.4
100	22,480	215	8.5	IJ119T	76.5	8.5	380 x 380 x 25	15 x 15 x 0.98	4	9
200	44,960	290	11.4	IJ2211T	189	21	508 x 508 x 25	20 x 20 x 0.98	7	15.5
320	71,930	380	15	IJ3615T	450	50	658 x 658 x 25	26 x 26 x 0.98	13	29
400	89,920	405	15.9	IJ4516T	558	62	708 x 708 x 25	28 x 28 x 0.98	15	33
670	150,610	520	20.5	IJ7520T	1,206	134	908 x 908 x 25	36 x 36 x 0.98	24	53

*See current price list for shipping weights.

CUSTOMER SERVICE CENTERS

World Headquarters The Americas Customer Service Center

5885 11th Street
Rockford, Illinois 61109 USA
Tel: 815.874.5556

Customer Service
Tel: 800.541.1418
Fax: 800.288.7031

Technical Services
Tel: 800.477.8326
info@powerteam.com

European Customer Service Center

Albert Thijsstraat 12
6471 WX Eygelshoven
The Netherlands

Customer Service
Tel: 31 (45) 5678877
Fax: 31 (45) 5678878
infoeurope@powerteam.com

Asia Pacific Customer Service Center

7 Gul Circle
Singapore 629563
Singapore

Customer Service
Tel: (65) 6265 3343
Fax: (65) 6265 6646
infoasia@powerteam.com

China Customer Service Center

No. 1568 Hua Shan Road
Treasury Building 11th Floor
Shanghai 200052, China

Customer Service
Tel: 86 (21) 2208.5888
Fax: 86 (21) 2208.5682
infochina@powerteam.com

powerteam.com